

CH

CHART HOUSE



AQUARIUM GUIDE FOR
CHART HOUSE LAS VEGAS

BLACK-SPOT TANG
ACANTHURUS BARIENE



RINGTAIL TANG
ACANTHURUS BLOCHII



THE CHART HOUSE AQUARIUM IS A 75,000 GALLON MARINE AQUARIUM THAT HOUSES OVER 500 ANIMALS REPRESENTING OVER 75 DIFFERENT SPECIES

THE FISH ARE FED TWICE A DAY. THE TYPES OF FOOD INCLUDE SEAWEED, MAZURI AQUATIC GEL DIET, SQUID, MYXIS SHRIMP, MACKEREL, HERRING, SARDINES, CAPELIN, AND ANCHOVIES.

THE GOLDEN NUGGET'S LIFE SCIENCES DEPARTMENT PERFORMS ALL OF THE ANIMAL HUSBANDRY AND MAINTENANCE FOR THE AQUARIUM.

EYE-STRIPE TANG
ACANTHURUS DUSSUMIERI



FOWLERI TANG
ACANTHURUS FOWLERI



POWDER BLUE TANG
ACANTHURUS LEUCOSTERNON



LINED TANG
ACANTHURUS LINEATUS



WHITE CHEEK TANG
ACANTHURUS NIGRICANS



BLACK SHOULDER TANG
ACANTHURUS NIGRICAUDA



ORANGE-SHOULDER TANG
ACANTHURUS OLIVACEUS



CHOCOLATE TANG / MIMIC TANG
ACANTHURUS PYROFERUS



THE CHART HOUSE TANK IS 35' LONG X 25' WIDE X 16' DEEP, AND THE SALT WATER IS MADE UP BY MIXING PURIFIED TAP WATER WITH A SPECIAL SALT MIX SPECIFICALLY DESIGNED FOR MARINE ANIMALS.

CONVICT TANG
ACANTHURUS TRIOSTEGUS



TOMATO CLOWNFISH
AMPHIPRION FRENATUS



CINNAMON CLOWNFISH
AMPHIPRION MELANOPUS



PORKFISH
ANISOTREMUS VIRGINICUS



CREAM ANGELFISH
APOLEMICHTHYS XANTHURUS



DIANA'S HOGFISH
BODIANUS DIANA



THE "CORALS" ARE ARTIFICIAL AND ARE SPECIALLY DESIGNED TO BE SAFE FOR AQUATIC LIFE. MOST OF THE FISH IN THE AQUARIUM ARE REEF-DWELLERS, SO THEY ARE "AT HOME"

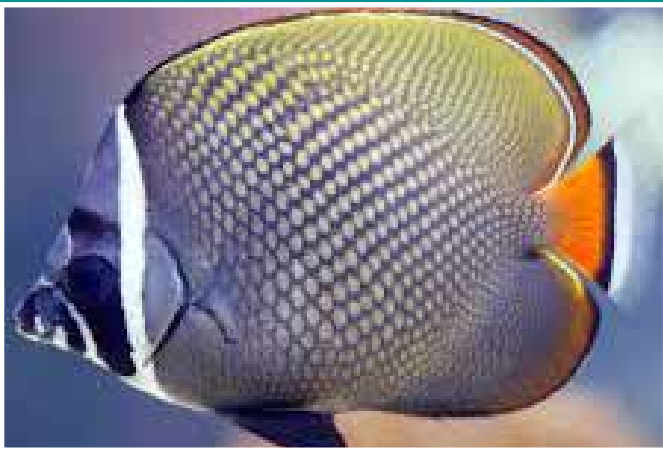
FUSILIER
CAESIO CUNING



THREADFIN BUTTERFLY
CHAETODON AURIGA



PAKISTAN BUTTERFLY
CHAETODON COLLARE



DOUBLE SADDLE BUTTERFLY
CHAETODON FALCULA



LINED BUTTERFLY
CHAETODON LINEOLATUS



RACCOON BUTTERFLY
CHAETODON LUNULA



THE "CORALS" ARE ARTIFICIAL AND ARE SPECIALLY DESIGNED TO BE SAFE FOR AQUATIC LIFE. MOST OF THE FISH IN THE AQUARIUM ARE REEF-DWELLERS, SO THEY ARE "AT HOME"

MERTEN'S BUTTERFLY
CHAETODON MERTENSII



LEMON BUTTERFLY
CHAETODON MILIARIS



FALSE DOUBLE SADDLE BUTTERFLY
CHAETODON ULIETENSIS



VAGABOND BUTTERFLY
CHAETODON VAGABUNDUS



SCRIBBLED ANGEL
CHAETODONTOPLUS DUBOULAYI



PERSONIFER ANGEL
CHAETODONTOPLUS MEREDITHI



PART OF THE DAILY ROUTINE OF THE LIFE SCIENCES DEPARTMENT
IS SCUBA DIVING ALL OF THE BIOLOGISTS ARE CERTIFIED DIVERS

SPINY BOXFISH / BURRFISH
CHILOMYCTERUS SCHOEPFII



HARLEQUIN TUSKFISH
CHOERODON FASCIATUS



FIJI DEVIL
CHRYSIPTERA TAPOU



JUMBO HAWKFISH
CIRRHITUS PINNULATUS



PANTHER GROUPE
CROMILEPTES ALTIVELIS



YELLOW-EYED TANG
CTENOCHAETUS STRIGOSUS



PART OF THE DAILY ROUTINE OF THE LIFE SCIENCES DEPARTMENT
IS SCUBA DIVING ALL OF THE BIOLOGISTS ARE CERTIFIED DIVERS

PAINTED SWEETLIPS
DIAGRAMMA PICTUM



LAMARCK'S ANGELFISH
GENICANTHUS LAMARCK



BLACKSPOT ANGELFISH (MALE)
GENICANTHUS MILANOSPILOS



GREEN MORAY EEL
GYMNOTHORAX FUNEBRIS



PASSER ANGELFISH
HOLACANTHUS PASSER



FLAGTAIL
KUHLIA MUGIL



THE DIVERS PERFORM DAILY OBSERVATIONS ON THE ANIMALS
AS WELL AS HUSBANDRY TRAINING AND DAILY ENRICHMENT.

BLUESTREAK CLEANER WRASSE
LABROIDES DIMIDIATUS



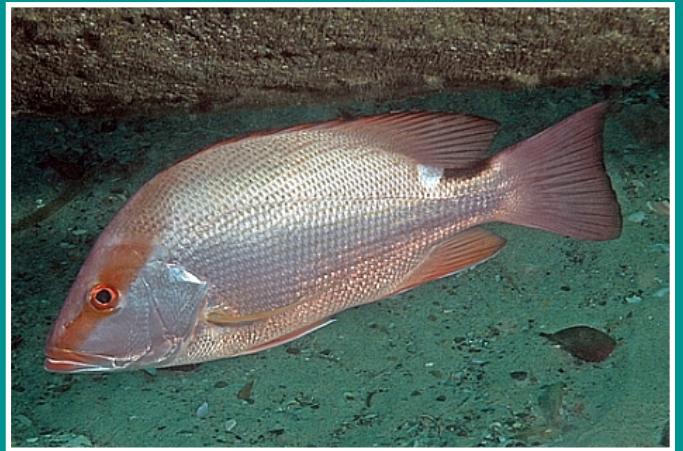
PADDLETAIL SNAPPER
LUTJANUS GIBBUS



BLUE-STRIPED SNAPPER
LUTJANUS KASMIRA



SCARLET SEA PERCH
LUTJANUS MALABARICUS



STRIPEY
MICROCANTHUS STRIGATUS



MONO
MONODACTYLUS ARGENTEUS

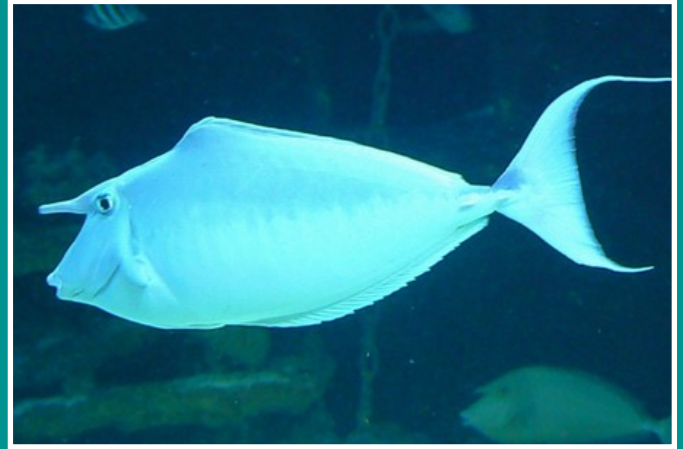


MANY OF THE FISH ARE VENOMOUS, AND HAVE VENOM GLANDS LOCATED AT THE BASE OF THEIR DORSAL SPINES, WHICH PROVIDE THEM WITH A DEFENSE AGAINST PREDATORS.

BLACKBAR SOLDIERFISH
MYRIPRISTIS JACOBUS



HUMPBACK UNICORNFISH
NASO BRACHYCENTRON



SPOTTED UNICORNFISH
NASO BREVIROSTRIS



BLONDE NASO TANG
NASO ELEGANS



ORANGE-SPINED TANG
NASO LITURATUS



HUMPHEAD UNICORNFISH
NASO TUBEROSUS



MANY OF THE FISH ARE VENOMOUS, AND HAVE VENOM GLANDS LOCATED AT THE BASE OF THEIR DORSAL SPINES, WHICH PROVIDE THEM WITH A DEFENSE AGAINST PREDATORS.

BLUE-SPINED UNICORNFISH
NASO UNICORNIS



VLAMINGI TANG
NASO VLAMINGII



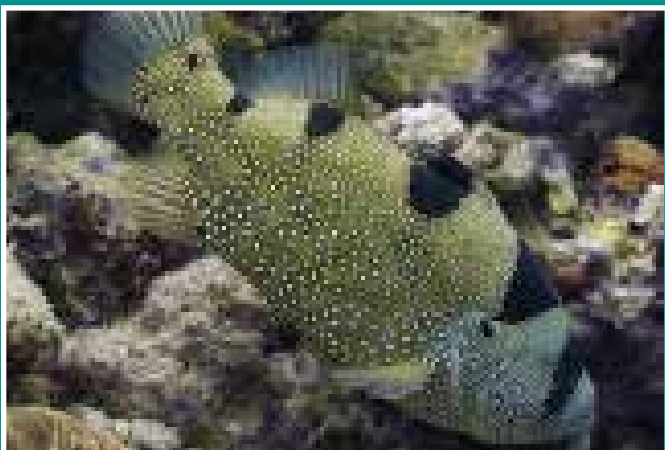
PACIFIC BLUE TANG
PARACANTHURUS HEPATUS



STRIPED SWEETLIPS
PLECTORHINCHUS LESSONII



LEAF LIP GROUPER
POGONOPERCA PUNCTATA



INDIAN OCEAN ORIENTAL SWEETLIPS
PLECTORHINCHUS VITTATUS



THE LIFE SCIENCES DEPARTMENT ALSO CARES FOR "THE TANK" – GOLDEN NUGGET'S 200,000 GALLON SHARK TANK LOCATED IN THE CENTER OF OUR SWIMMING POOL AREA.

BLUE RINGED ANGEL
POMACANTHUS ANNULARIS



ASFUR ANGEL
POMACANTHUS ASFUR



EMPEROR ANGEL
POMACANTHUS IMPERATOR



HALF-MOON ANGELFISH
POMACANTHUS MACULOSUS



MAJESTIC ANGEL
POMACANTHUS NAVARCHUS



SIXBAR ANGEL
POMACANTHUS SEXSTRIATUS



THE LIFE SCIENCES DEPARTMENT ALSO CARES FOR "THE TANK" – GOLDEN NUGGET'S
200,000 GALLON SHARK TANK LOCATED IN THE CENTER
OF OUR SWIMMING POOL AREA.

KORAN ANGEL
POMACANTHUS SEMICIRCULATUS



SCARLET-FINNED SQUIRRELFISH
SARGOCENTRON CAUDIMACULATUM



SABRE SQUIRRELFISH
SARGOCENTRON SPINIFERUM



DUSKY SQUIRRELFISH
SARGOCENTRON VEXILLARIUM



BLUEBARRED PARROTFISH (FEMALE)
SCARUS GHOBBAN



HAWAIIAN SQUIRRELFISH
SARGOCENTRON XANTHERYTHRUM



THE LIFE SCIENCES DEPARTMENT ALSO CARES FOR "THE TANK" – GOLDEN NUGGET'S
200,000 GALLON SHARK TANK LOCATED IN THE CENTER
OF OUR SWIMMING POOL AREA.

BLUE SPOTTED RABBITFISH
SIGANUS CORALLINUS



LOOKDOWN
SELENE VOMER



YELLOW BLOTCH RABBITFISH
SIGANUS GUTTATUS



TWO BARRED RABBITFISH
SIGANUS DOLIATUS



LINED RABBITFISH
SIGANUS LINEATUS



BROWN-SPOTTED RABBITFISH
SIGANUS STELLATUS



THE LIFE SCIENCES DEPARTMENT ALSO CARES FOR “THE TANK” – GOLDEN NUGGET’S
200,000 GALLON SHARK TANK LOCATED IN THE CENTER
OF OUR SWIMMING POOL AREA.

ONE-SPOT FOXFACE
SIGANUS UNIMACULATUS



RED-FIN FOXFACE
SIGANUS MAGNIFICUS



BICOLOR FOXFACE
SIGANUS USPI



FOXFACE
SIGANUS VULPINUS



RED SEA SAILFIN TANG
ZEBRASOMA DESJARDINII



THREAD-FIN SNAPPER
SYMPHORUS NEMATOPHORUS

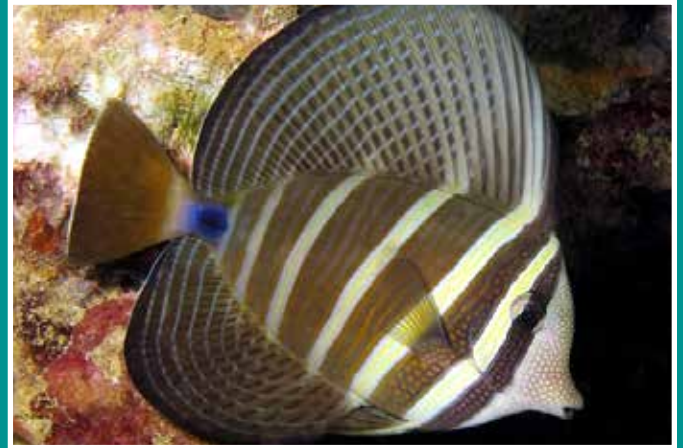


THE LIFE SCIENCES DEPARTMENT ALSO CARES FOR "THE TANK" – GOLDEN NUGGET'S
200,000 GALLON SHARK TANK LOCATED IN THE CENTER
OF OUR SWIMMING POOL AREA.

PURPLE TANG
ZEBRASOMA XANTHURUM



SAILFIN TANG
ZEBRASOMA VELIFERUM



ENRICHMENT IN THE CHART HOUSE AQUARIUM

WHAT IS ENRICHMENT?

ENRICHMENT IS PHYSICALLY OR MENTALLY STIMULATING ITEMS THAT ALLOW ANIMALS TO DEMONSTRATE NATURAL BEHAVIORS, AND GIVES THEM CHOICE IN ENVIRONMENTAL ENGAGEMENT FURTHERING THEIR PHYSICAL AND MENTAL WELL-BEING.

THERE ARE MANY DIFFERENT KINDS OF ENRICHMENT ENVIRONMENTAL, SENSORY, AND DIETARY. MANY OF THE TYPES OF ENRICHMENT CAN ALSO OVERLAP, CREATING ITEMS THAT ARE ENRICHING TO ANIMALS IN A VARIETY OF WAYS.

WE GIVE OUR ANIMALS ENRICHMENT MADE WITH THEM IN MIND AND WE ALWAYS CONSIDER THE SAFETY FOR OUR ANIMALS BEFORE GIVING THEM A NEW ENRICHMENT ITEM.

WHAT ENRICHMENT ARE WE GIVING OUR FISH?

CHART HOUSE AQUARIUM GETS ENVIRONMENTAL, DIETARY, AND SENSORY ITEMS.

EXAMPLES OF SOME ENRICHMENT YOU MIGHT SEE IN THE TANK:



HOLE-E ROLLER



PVC ELBOW



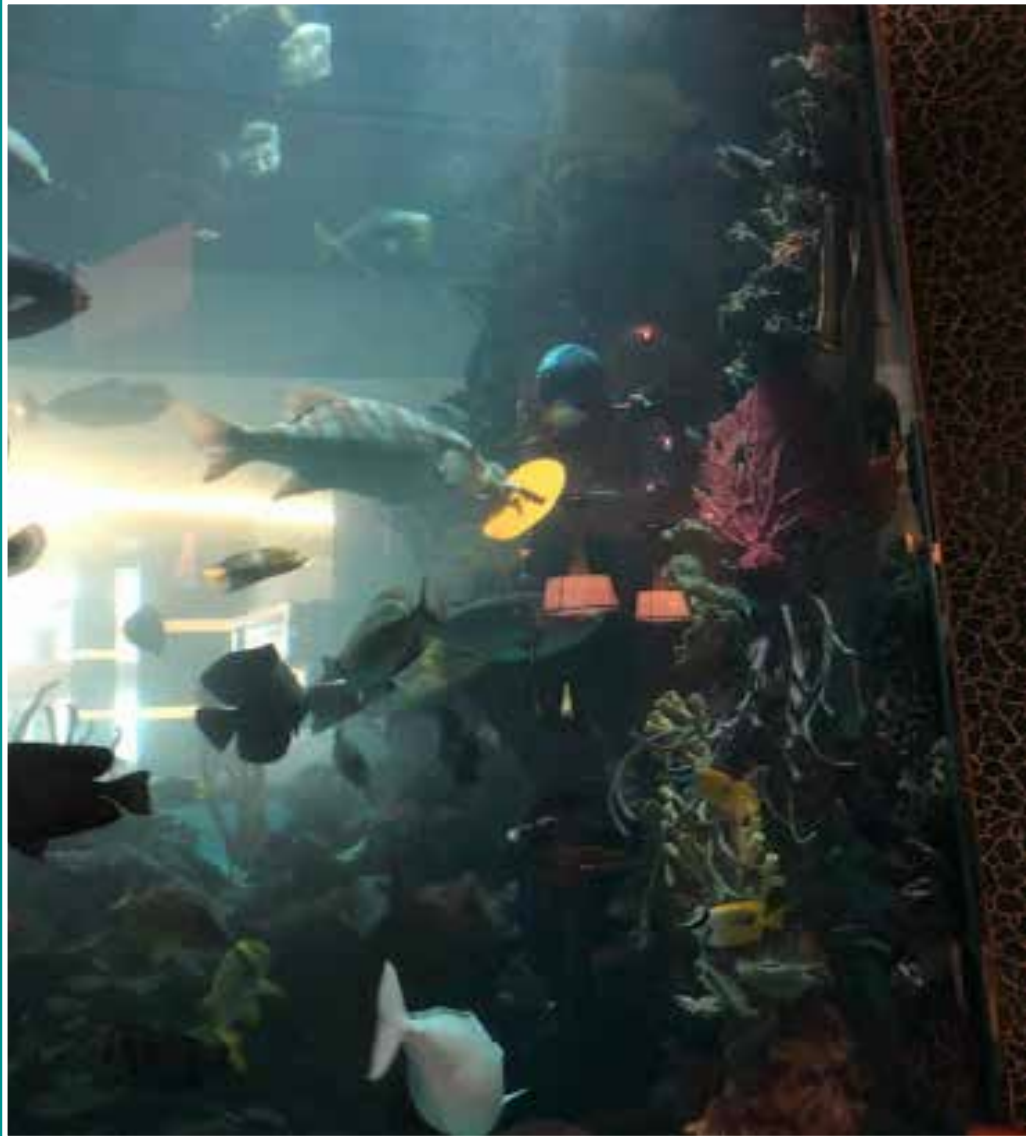
CLAMS



MIRROR

TARGET TRAINING THE THREADFIN SNAPPER

(SYMPHORUS NEMATOPHORUS)



WHY ARE WE TRAINING A FISH?

TRAINING IS HELPFUL IN MANY WAYS. TRAINING IS TEACHING. IT CAN HELP TEACH THE ANIMALS FORMS OF PHYSICAL EXERCISE, LIKE USING THE WHOLE AREA THEY HAVE AND DISPLAYING BEHAVIORS THAT EXERT MORE ENERGY. IT CAN GIVE THEM MENTAL STIMULATION, USING THEIR BRAINS TO PROBLEM SOLVE. FINALLY, TRAINING TEACHES THEM TO COOPERATE IN BEHAVIORS USED FOR MEDICAL PROCEDURES, LIKE VOLUNTARY BLOOD DRAWS, NETTING, AND TACTILE INSPECTIONS.

WHAT IS THE ORANGE CIRCLE?

THE ORANGE CIRCLE IS THE THREADFIN SNAPPER'S TARGET. A TARGET IS A POINT OF REFERENCE FOR BEHAVIORS, AND HELPS CREATE A DESIGNATED POSITION (STATION) FOR TRAINING.



CHART HOUSE